

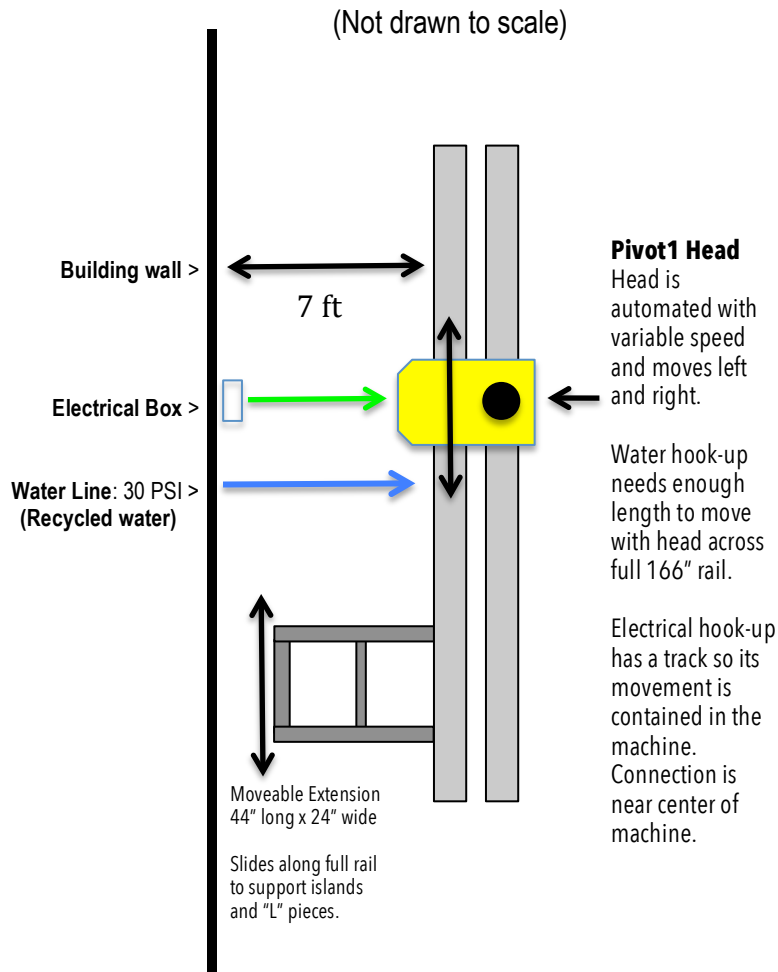


# EagleRock

MACHINE CONNECTION HOOKUPS

## PIVOT1

*A SOLID CUT ABOVE*



### Pivot1 Miter Saw Connection:

- ➔ **Power Required:** 208, 220 or 240 volts, 3-phase 30 Amp breaker
- ➔ #9 copper wire – gauge required throughout connection including ground (max. run length 150')
- ➔ Run enough length from electrical breaker to wire to the machine connect (10 feet)
- ➔ Standard type hose connection (male)

### PLACEMENT NOTE:

The Pivot1 shown in this diagram runs parallel to the back building wall. Depending on your space and preference, the machine could also be placed perpendicular to the wall. The extension is moveable and slides along the full 166" rail length.

### INSTALLATION:

Install feet • lift machine into place • level machine •  
• use shims to insure the two rails are straight and not bowed at all • install bellows at front • connect power • connect water • test

**BLADE:** 10" blade with 30mm arbor

We recommend using a continuous type (tile) diamond blade for the best results and cleanest cuts.

Be sure to prepare your installation location with these fittings that will couple and fit perfectly with our machine fittings. These elements are what you should have in place.

### Recycled Water:

Requires a standard  $\frac{3}{4}$ " male garden hose style fitting with 30 PSI at the machine



### Electric: #9 copper wire only

3 Phase 208, 220 or 240 V

Amperage: 30 Amps

4 wires to machine

